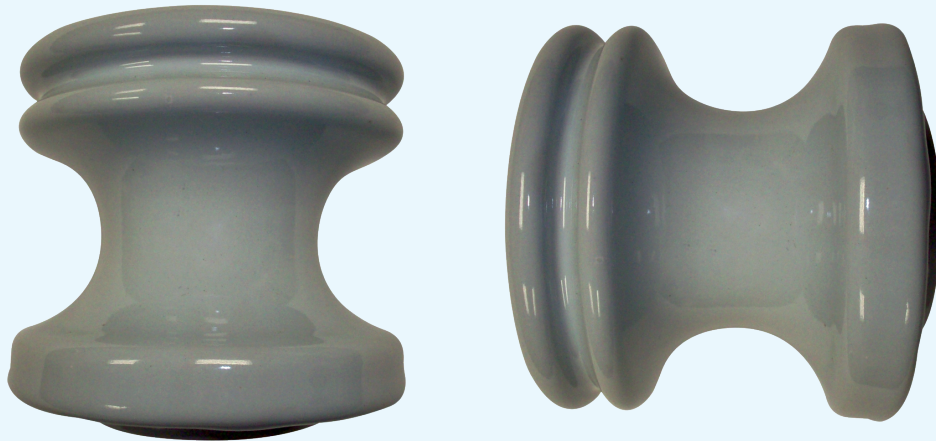


Spool Insulators

Procelain Insulators



Catalog Number	P53-1G	P53-2G	P53-3G	P53-4G	P53-5G
ANSI Class	53 - 1	53 - 2	53 - 3	53 - 4	53 - 5
Mechanical Values (Ultimate)*					
Transverse Strength (lbs)	2,000	3,000	4,000	4,500	6,000
Electrical Values					
Low Frequency Dry Flashover (kV)	20	25	25	25	35
Low Frequency Wet Flashover Vertical (kV)	8	12	12	12	18
Low Frequency Wet Flashover Horizontal (kV)	10	15	15	15	25
Packing & Shipping Data					
Net Weight Each (lbs)	0.44	1.14	1.21	2.42	2.65
Packed Weight Each (lbs)	0.46	1.20	1.38	2.56	2.72
Standard Package Quantity	100	50	40	18	18

Gray Glaze is standard.

For Brown or White Glaze add "B" or "W" to catalog number suffix

*RUS ACCEPTED

